



PIKES PEAK  
COMMUNITY  
FOUNDATION

Your Legacy. Our Mission. Since 1928.



## OUR MISSION

To inspire a passionate community to forge an enduring legacy now and for future generations.

## OUR VISION

A thriving, resilient, sustainable Pikes Peak Region with a vibrant quality of life for all.

## OUR COMMITMENTS

Mission First. Excellence in Everything. Walk our Talk.



## TABLE OF CONTENTS

Generations of Generosity _____	02
Our Work Today _____	03
Community Impact Funds _____	04
Emergency Relief Funds _____	05
Design Your Impact _____	06
Flexible Ways to Give _____	07
Power of Permanent Giving _____	08
Leaving a Legacy _____	09
Ten Reasons to Partner with Your Community Foundation ____	10
Your Notes _____	12

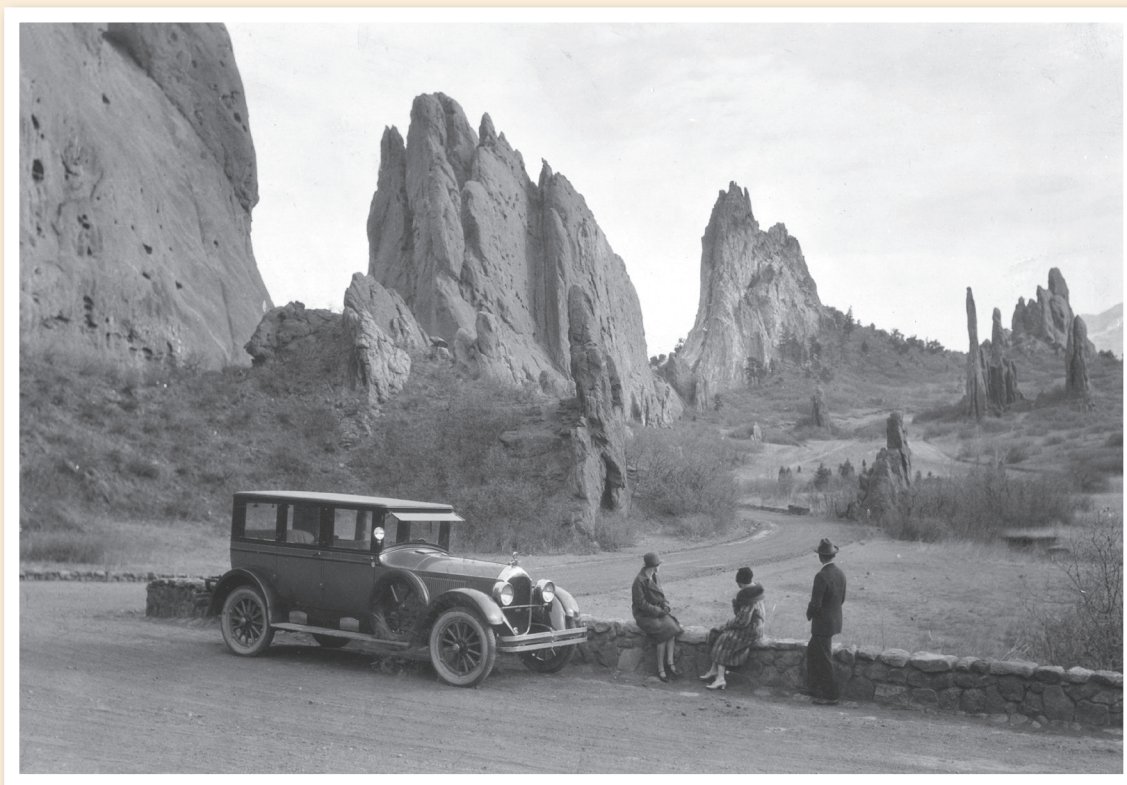
## GENERATIONS OF GENEROSITY

In 1928, a group of visionary citizens came together to create the Colorado Springs Community Trust. Their goal was to build a permanent charitable endowment that would improve the quality of life in the Pikes Peak Region.

As our region evolved, so did our needs. In 1996, the Trust's Board concluded that a community foundation would better serve the evolving needs of donors and nonprofits. By 1998, the Pikes Peak Community Foundation was established and operating alongside the trust, uniting decades of charitable leadership. In 2009, the Trust was fully integrated into the Foundation.

Since our first grant in 1928, we have invested more than \$164 million into the Pikes Peak Region. These funds have supported vital work in El Paso and Teller Counties and strengthened the fabric of our community.

Today, we continue to honor the legacy of those early visionaries. Every grant, every partnership, and every initiative reflect our enduring commitment to building a thriving, resilient, and sustainable Pikes Peak Region.



GARDEN OF THE GODS, 1927: PHOTOGRAPH BY HARRY L. STANDLEY.  
COURTESY OF SPECIAL COLLECTIONS, PIKES PEAK LIBRARY DISTRICT, 102-2136





COLORADO SPRINGS PIONEERS MUSEUM TODAY

## OUR WORK TODAY

Pikes Peak Community Foundation continues our legacy of stewardship by investing in bold, community-driven initiatives that shape the future of the region. From funding innovative programs in education and public safety to supporting grassroots efforts that strengthen neighborhoods, our work is rooted in the belief that lasting impact begins with listening.

As responsible stewards of a growing network of charitable funds, Pikes Peak Community Foundation is dedicated to aligning generosity with meaningful, lasting improvements in community conditions. We help individuals, families, and businesses transform their charitable goals into enduring legacies by offering flexible giving tools and thoughtful guidance.

We work alongside these individuals, families, and businesses to create charitable funds that reflect their values and respond to the evolving needs of our community. These funds are carefully invested and responsibly stewarded to ensure lasting impact.

Our work is guided by a dedicated Board of Trustees who are trusted professionals with deep roots in the region. Their leadership ensures that every decision we make serves the best interests of our community.

We work to ensure that charitable dollars are invested wisely and directed where they are needed most, now and for generations to come.

We invest in the people, places, and possibilities that make the Pikes Peak Region thrive. Our Community Impact Funds are designed to support high-impact initiatives across El Paso and Teller Counties, with a focus on areas that shape quality of life and build long-term resilience.

## COMMUNITY IMPACT FUNDS

We offer a range of field-of-interest funds that allow donors to support causes they care about while addressing the region's evolving needs. These funds pool resources to maximize impact and are guided by advisors and community input.

**THE FUND FOR A THRIVING COMMUNITY** is Pikes Peak Community Foundation's most flexible and responsive grantmaking resource. It supports nonprofit organizations working to build a thriving, resilient, and sustainable Pikes Peak Region. This fund is designed to meet the evolving needs of El Paso and Teller Counties by investing in initiatives that reflect community priorities.

### SOME OF OUR OTHER IMPACT FUNDS

#### PIKES PEAK FUND FOR THE ARTS

Art and culture are essential to the human experience. The Pikes Peak Fund for the Arts invests in projects with significant impact that advance a diverse arts and culture environment, which contributes to a vibrant quality of life for all.

#### PIKES PEAK FUND FOR THE OUTDOORS

Living near and around Pikes Peak creates a love for the natural beauty of our region. The purpose of the Pikes Peak Fund for the Outdoors is to advance growth, stewardship, preservation, and responsible use of outdoor spaces in the region.

#### PIKES PEAK FUND FOR HEALTH & HUMAN SERVICES

This fund provides essential resources for healthcare access, mental health initiatives, and addresses challenges like addiction and food insecurity. It also supports vulnerable populations to build a healthier, more resilient community.

#### PIKES PEAK COMMUNITY FOUNDATION PROGRAM FUND

This Fund supports the work of the Foundation, including community engagement, convening around issues affecting the community, grantmaking and other nonprofit support, and leadership initiatives. Since 1928, PPCF has inspired philanthropy, mobilized resources, and helped individuals achieve their charitable goals.



## EMERGENCY RELIEF FUNDS

When disaster strikes, PPCF activates the Pikes Peak Emergency Relief Funds to provide rapid, coordinated support to affected communities. These funds are governed by a committee made up of PPCF staff and local leaders, ensuring that resources quickly reach trusted nonprofits delivering direct services.

Whether responding to wildfires, floods, snow events, or public health emergencies, our emergency funds help communities recover and rebuild with resilience. We also maintain readiness through partnerships with emergency management agencies and voluntary organizations active in disaster response. We maintain separate Emergency Relief Funds for El Paso and Teller Counties.

### FUNDING SPOTLIGHT

#### Where Inclusion and Imagination Meet

Pikes Peak Community Foundation is proud to have funded the arts collaboration between the Colorado School for the Deaf and the Blind (CSDB) and the Colorado Springs Fine Arts Center (FAC) at Colorado College.

The centerpiece is an arts-based residency co-designed by CSDB faculty and FAC staff, led by professional teaching artists during the school day. Students from the School for the Blind and the School for the Deaf participate in inclusive, student-centered lessons that bridge the schools and lead to original performance-based works shaped by student interests and voices.



A hallmark of the program is a culminating public presentation at the FAC, where students exhibit artwork and share an original performance with support from professional staff in curation, rehearsal, and production. Accessibility features such as tactile engagement, audio description, and sign language interpretation ensure a welcoming experience for all. With PPCF's support, the collaboration expands access, amplifies student creativity, and connects our community through the power of the arts.

## DESIGN YOUR IMPACT

We offer a range of giving options designed to meet your philanthropic and financial goals. Whether you are starting a fund, contributing to an existing one, or exploring new ways to make an impact, our flexible approach makes it easy to support what matters most to you.

### TYPES OF FUNDS

#### UNRESTRICTED FUND

Supports a wide range of community needs, giving the Community Foundation flexibility to respond to emerging priorities and opportunities.

#### FIELD OF INTEREST FUND

Targets a specific cause or population, like education, the arts, or seniors, while allowing the Community Foundation to select the most impactful projects within that area.

#### DONOR ADVISED FUND

Enables donors to recommend grants to nonprofits over time, offering flexibility and ongoing involvement in charitable giving.

#### DESIGNATED FUND

Provides consistent support to one or more named organizations, ensuring long-term funding for specific missions or programs.

#### AGENCY FUND

Established by a nonprofit to build long-term financial stability, with the Community Foundation managing the investment and distribution of funds.

#### GIVING CIRCLE

A group of donors that pools resources to fund shared causes, combining community engagement with collective impact.

### ENDOWED VS. NON-ENDOWED

Any fund can be set up as endowed, non-endowed, or a combination of both. Endowed funds are designed to last forever, with annual distributions made according to our spending policy. Non-endowed funds offer flexibility for immediate or short-term giving. A blended approach allows charitable support to manage both current needs and long-term impact.



## FLEXIBLE WAYS TO GIVE

From cash, to appreciated securities, to real estate and beyond, PPCF can transform virtually any asset into charitable impact.

TYPES OF FUNDS	HOW TO FUND	CASH & MARKETABLE SECURITIES	QUALIFIED CHARITABLE DISTRIBUTIONS	TRUSTS	ESTATES (LEGACY)	FUND TRANSFERS	REAL ESTATE & OTHER HARD ASSETS	OTHER
	Unrestricted	✓	✓	✓	✓	✓	✓	✓
	Field of Interest	✓	✓	✓	✓	✓	✓	✓
	Donor Advised	✓	✗	✓	✓	✓	✓	✓
	Designated	✓	✓	✓	✓	✓	✓	✓
	Agency <small>All funding is by the agency</small>	✓	✗	✗	✗	✗	✓	✓
	Giving Circle	✓	✓	✓	✓	✓	✓	✓

Please note: this is not tax advice, we recommend you consult a professional tax advisor.

## POWER OF PERMANENT GIVING

Endowments are built to last. Since 1928, we have stewarded these everlasting charitable funds that continue to grow and serve the Pikes Peak Region. Our original endowments remain active today, a testament to the lasting impact of thoughtful generosity. We also hold endowments on behalf of organizations to support their missions in perpetuity. Each endowment we steward is a promise to the community to invest wisely, manage responsibly, and stay responsive to changing needs of the Pikes Peak Region.

Any donor may establish endowments to ensure their charitable impact continues well into the future. These funds are designed to grow over time, creating a permanent source of support for the causes and communities they care about most. Whether it is a named fund focused on a specific issue or a broader commitment to regional well-being, endowments offer a way to turn current gifts into lasting opportunity. With each new fund, donors become part of a legacy of stewardship that strengthens the region for generations to come.



VINDICATOR MINE IN VICTOR — A PROUD EXAMPLE OF TELLER COUNTY'S ENDURING MINING LEGACY



## LEAVING A LEGACY

Pikes Peak Community Foundation was born from a simple but powerful idea: that a community can be strengthened by the generosity of those who love it. In 1928, visionary people created the Colorado Springs Community Trust, planting the seeds of permanent charitable funds that continue to serve the region today.



To honor those who continue in our founders' footsteps, we created the **1928 SOCIETY**, in recognition of donors who have included the Foundation in their estate plans or similar strategies to benefit the community they cherish.

Legacy giving offers powerful benefits. Donors accomplish their philanthropic goals and build on their legacy by using tax efficient tools. Options like naming PPCF as a beneficiary of a retirement plan or creating a charitable trust allow donors to support the causes they care about while also planning for their families and financial future.

If you have included the Foundation in your estate plans, we encourage you to let us know. We want to understand your intentions clearly and ensure your wishes are honored with care and integrity.

### LEGACY DONOR FOCUS



NICOLE RIVET, VP OF COMMUNITY  
INVESTMENT & AUDREY ELDRIDGE

“As a widow with no children, PPCF has proven to be the perfect partner for me to ensure that my legacy of giving creates a lasting impact for the community where I have lived my whole life. PPCF made it easy for me to create the Kit and Audrey Eldridge Legacy fund. This fund honors the lives that my late husband and I created for ourselves in this community. Choosing PPCF to steward my legacy feels deeply right.”

—AUDREY ELDRIDGE, 1928 SOCIETY MEMBER

## TEN REASONS TO PARTNER WITH YOUR COMMUNITY FOUNDATION

When you partner with the Pikes Peak Community Foundation, you're not just making a donation, you're building a relationship with trusted professionals in philanthropy. Whether you're planning a legacy gift, managing complex assets, or simply looking to make a meaningful impact, we offer personalized support and deep community knowledge to help you achieve your goals.

Here are ten reasons why working with your community foundation can be one of the most effective and rewarding ways to support the causes you care about:

- 1 **A TRUSTED PARTNER IN PHILANTHROPY** with broad expertise on community issues and opportunities.
- 2 **THOUGHTFUL, PERSONALIZED SERVICE** to help you achieve meaningful impact through philanthropy.
- 3 **OPPORTUNITY TO JOIN A NETWORK** of donors and nonprofits making a difference for causes you care about.
- 4 **ACCESS TO DONOR EDUCATION** and learning opportunities.
- 5 **FLEXIBILITY** — the Foundation accepts a wide variety of assets and accommodates complex gifts.
- 6 **PARTNERSHIP WITH YOUR TRUSTED PROFESSIONAL ADVISORS** to create charitable strategies that maximize tax advantages.
- 7 **BIGGER “BANG FOR YOUR BUCK,”** as your administrative fees are reinvested locally.
- 8 **ABILITY TO SUPPORT REGIONAL COLLABORATION** work to address the Pikes Peak Region's most pressing challenges.
- 9 **OPPORTUNITY TO AMPLIFY THE WORK** of local nonprofits through the Foundation's nonprofit support programs.
- 10 **KNOWLEDGE THAT YOUR DOLLARS HELP** your Community Foundation respond in times of crisis, seize the opportunities of today, and prepare for the challenges ahead.





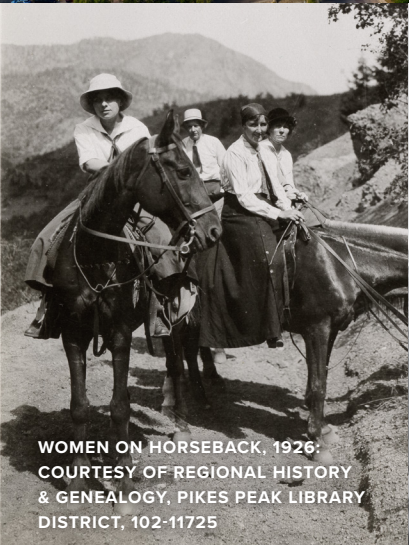
DOWNTOWN COLORADO SPRINGS



PHIL LANE, KATIE WILLEMARCK, AND LARRY GADDIS:  
INAUGURAL RECIPIENTS OF THE PIKES PEAK VISIONARY AWARD IN 2025



TELLER COUNTY TROLL



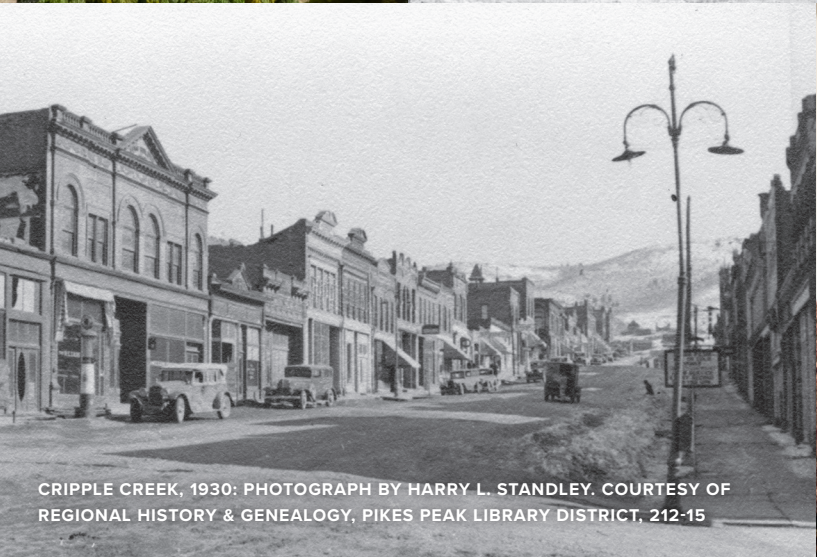
WOMEN ON HORSEBACK, 1926;  
COURTESY OF REGIONAL HISTORY  
& GENEALOGY, PIKES PEAK LIBRARY  
DISTRICT, 102-11725



GARDEN OF THE GODS TODAY



PEAK VIEW MINE, 1925: PHOTOGRAPH BY HARRY L. STANDLEY.  
COURTESY OF REGIONAL HISTORY & GENEALOGY, PIKES PEAK LIBRARY DISTRICT, 013-1044



CRIPPLE CREEK, 1930: PHOTOGRAPH BY HARRY L. STANDLEY. COURTESY OF  
REGIONAL HISTORY & GENEALOGY, PIKES PEAK LIBRARY DISTRICT. 212-15



FRIENDS OF PPFC ENJOYING ONE OF THE MANY  
FOUNDATION-HOSTED COMMUNITY EVENTS











PIKES PEAK  
COMMUNITY  
FOUNDATION

Colorado Springs, CO • [info@ppcf.org](mailto:info@ppcf.org) • (719) 389-1251 • [ppcf.org](http://ppcf.org)

